

CHAMPAGNE & CAVIAR

34.14M (112") | CUSTOM LINE | 2004(2024)









CHAMPAGNE & CAVIAR



CHAMPAGNÈ & CAVIAR

A close-up photograph of a white boat's hull. The text "CHAMPAGNÈ & CAVIAR" is printed in a bold, blue, serif font. The boat is on a body of blue water. In the foreground, a red cushion is visible on a white surface, likely part of the boat's seating. A thin red line is visible on the white hull above the text.

WELCOME ON BOARD

Built in 2004 by Custom Line and refitted in 2024, CHAMPAGNE AND CAVIAR accommodates 12 guests in five cabins, attended by a dedicated crew of six. This dynamic charter yacht boasts expansive communal areas, generous outdoor spaces for socializing, and a smooth, high-speed cruising experience. For those looking to unwind, CHAMPAGNE & CAVIAR features multiple alfresco lounges, sunbeds, outdoor wet bars, and an elevated Sundeck—perfect for soaking in the serenity of the sea and the breathtaking views of the Mediterranean Coasts.





MAIN DECK AFT



MAIN DECK AFT



SUN DECK

Outdoors, the sun deck is tailored to al fresco living with spacious exterior areas for a yacht of her size. A dining table, sun pads and sun loungers are perfect for whiling away hours in the sun, enjoying a sunset meal or simply relaxing with a book. On the flybridge with Bimini top, guests can enjoy a second bar and further space to relax.





CHAMPAGNE & CAVIAR

SUN DECK



CHAMPAGNE & CAVIAR

C&C

CHAM
& CA

SUN DECK



SUN DECK

Forward on the main deck affords the best views on board, with yet more sunpads for relaxing in comfort and drinking in the sweeping horizon or a signature Champagne cocktail for the ultimate aperitif.



INTERIORS

Elegant and fresh interior spaces include the main saloon, finished in warm tones of American walnut. Large windows fill the interior with natural light, highlighting the available space in this light and airy large-volume yacht. U-shaped seating, a widescreen television, full entertainment system and bar complete the package. A striking glass dining table with seating for ten guests is located forward of the main saloon, creating an ideal setup for intimate dinner parties or larger formal dining.



MAIN SALON



MAIN SALON



MAIN SALON



DINING

ACCOMMODATION

Families will particularly love CHAMPAGNE & CAVIAR thanks to her child-friendly setup. Accommodation includes a full-beam master, two doubles, one twin with Pullman berth and one cabin with three Pullman berths, convertible into a massage room/gym/kids playroom. Each cabin comes equipped with an ensuite bathrooms and provides a contemporary, well-appointed and spacious retreat for guests to enjoy in full. With a top-of-the-line entertainment system, guests will feel right at home.



MASTER CABIN



MASTER CABIN



GUEST CABIN



GUEST CABIN



GUEST CABIN



GUEST CABINS



GUEST BATHROOM



TWIN CABIN



TWIN CABIN



GUESTS BATHROOM



FIFTH CABIN/PLAYROOM/MASSAGE ROOM





FIFTH CABIN/PLAYROOM/MASSAGE ROOM



FIFTH CABIN/PLAYROOM/MASSAGE ROOM



GUESTS ENSUITE



GUESTS ENSUITE



LIFESTYLE

Pamper yourself and your guests with CHAMPAGNE & CAVIAR unique yacht spa with a range of self-care and a space that seamlessly transforms into a gym for workout sessions. Benefiting from a major refit in 2024, new and exclusive features have been added enabling CHAMPAGNE & CAVIAR to redefine luxury with every detail. When the anchor is dropped, a host of water toys and tenders are available for guests of all ages to make every charter even more unforgettable. The professional crew are on hand to provide child-friendly fun, and a versatile swim platform provides convenient easy access to the water, not to mention a coveted place to enjoy life at sea.



WATERTOYS



WATERTOYS



WATERTOYS



SPECIFICATIONS

CATEGORY:	MOTOR YACHT
LOA:	34.14M (112')
BEAM:	6.91 M (22' 8")
DRAFT:	1.85 M (6' 1")
BUILDER:	CUSTOM LINE
YEAR BUILT:	2004
REFIT YEAR:	2024
EXTERIOR DESIGNER:	ZUCCON
INTERIOR DESIGNER:	ZUCCON
HULL MATERIAL:	GRP
HULL CONFIGURATION:	PLANING HULL
STRUCTURE MATERIAL:	GRP
GRT:	213
DISPLACEMENT:	940 T FULL LOAD
CLASSIFICATION:	RINA
FLAG:	MALTESE

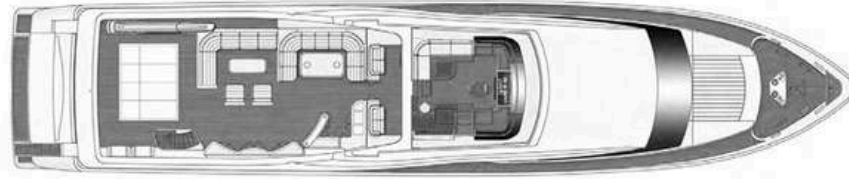
GUESTS:	12
GUESTS CABINS:	5
CABINS CONFIGURATION:	3 DOUBLES, 2 TWIN
BEDS CONFIGURATION:	1 QUEEN, 2 DOUBLES, 2 SINGLES, 4 PULLMAN
CREW:	6

ENGINES:	2 X MTU 2000 1471 KW X2 16V YEAR 2002
STABILIZER:	AT ANCHOR & UNDERWAY
CRUISING SPEED:	13 KNOTS
MAX SPEED:	20 KNOTS
FUEL CONSUMPTION:	190 LITRES/HR (CRUISING)

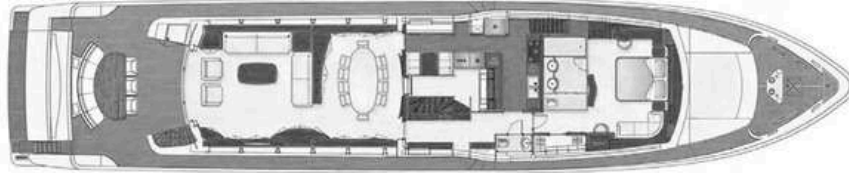


FEATURED HIGHLIGHTS

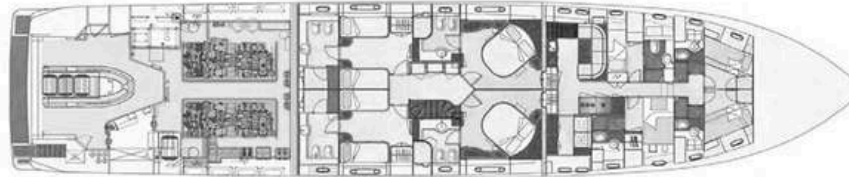
- ELEGANT AND FRESH INTERIOR FOLLOWING AN EXTENSIVE REFIT IN WINTER 2023 - 2024
- FULL-BEAM MASTER CABIN FOR SUPERIOR COMFORT
- THE 5TH CABIN CAN BE CONVERTED INTO MASSAGE ROOM/GYM AREA/KIDS PLAYROOM
- LARGE WINDOWS ALLOWING PLENTY OF NATURAL LIGHT TO STREAM IN
- SPACIOUS EXTERIOR AREAS FOR HER SIZE
- STABILISERS AT ANCHOR & UNDERWAY
- BRAND NEW ANTUDO 23 TOWABLE/CHASE TENDER
- LARGE CHOICE OF WATER TOYS, INFLATABLE PLATFORM AND CANAPÉ



SUN DECK



MAIN DECK



LOWER DECK

GENERAL ARRANGEMENT

